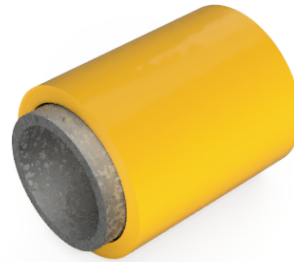
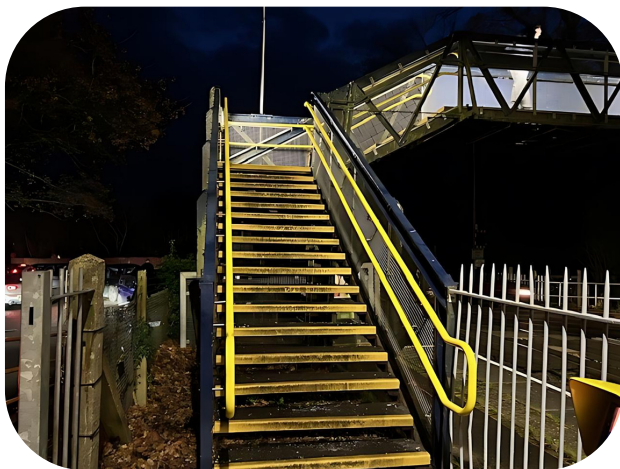


# STARGARD

The original PVC “warm to the touch”- “not cold to the touch” UV stable handrail.

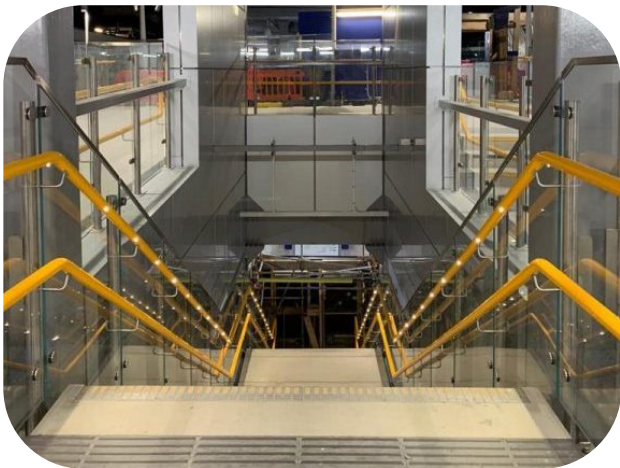


4 mm (4,000 microns), thick PVC  
sleeved over galvanised steel tube



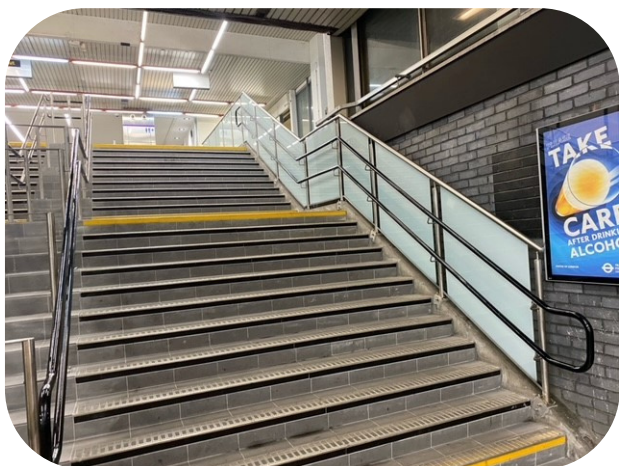
4mm (4,000 microns) thick PVC sleeved over galvanised steel tube after fabrication, giving 42mm or 50mm finished diameter. The double protection of galvanised tube and thick PVC sleeving is robust, will not chip and resists knocks and bumps.

Stargard is available in a range of colours.



On site tests in cold weather have shown that Stargard handrail is generally 4 degrees Centigrade warmer than a powder coated handrail in the same location. (and cooler in hot weather).

Stargard handrail can be fitted to a range of balusters e.g. stainless steel, Stargard PVC sleeved or galvanised steel. It can also be fitted to existing balustrade or used simply as wall handrail.



Stargard can be manufactured in lengths up to 5 metres thus keeping the number of joints on site to an absolute minimum

Unit 14, Woodland Close, Clipstone,  
NG21 9BF

**Sales:** 07840 997322

[sales@bespokeprojects.biz](mailto:sales@bespokeprojects.biz)

**Office:** 01623 634589

[info@bespokeprojects.biz](mailto:info@bespokeprojects.biz)

